

ERIEZ[®] ***xtreme*** **METAL DETECTOR**

PROTECT YOUR CUSTOMERS AND BRAND IMAGE



MADE IN USA



smart
SYSTEM MONITORING
and REPORT TECHNOLOGY



Xtreme® Metal Detector is installed in the packaging plant of Smith's Hot Dogs. Smith's® is the official Hot Dog of the Pittsburgh Penguins.

Pittsburgh Penguins are a trademark of Lemieux Group, LP.



The Xtreme® Metal Detector

Eriez' **Xtreme®** Metal Detector is designed to achieve the highest levels of sensitivity to detect small ferrous, non-ferrous and stainless steel metal contaminants in packaged, loose and free-fall applications.

BEST-IN-CLASS VALUE

The **Xtreme's** benchmark-setting sensitivities combined with its feature-packed controls in a high-pressure wash down aperture head, at the price of a mid-range detector, make it the best value on the market today.

In its base package, the Xtreme Metal Detector offers a 7" easy-to-use touch screen interface, multiple preprogrammed languages, easy set up and reporting, multiple USB and interface ports, remote access and high-pressure wash down design.



Xtreme® Sensitivity & Control

SENSITIVITY

A wide range of variables can affect a metal detector's sensitivity. Some of these include:

Known variables affecting metal detectability

- Product temperature
- Product characteristics like moisture and salt content
- Aperture opening size
- Packaging material – foil or recycled paper
- Packaging labels or markings

Unknown variables affecting metal detectability

- Size, type and orientation of tramp metal
- Excessive vibration/improper installation
- Adverse electromagnetic interference

The **Xtreme®** Metal Detector uses a balanced coil to detect minute changes in the signal. The signal is set at a frequency designed to “see” a product with a boundary, which is deemed within normal range. The boundary can be expanded or contracted based on product variation and user preference. Any detection of a metallic object outside the normal boundary signals a metal detection event.



The Xtreme® Metal Detector with full color touch screen.





XTREME® SOFTWARE

The **Xtreme** Metal Detector offers easy set up, operation and reporting from a large well-designed graphical interface.

Set-up and Operation

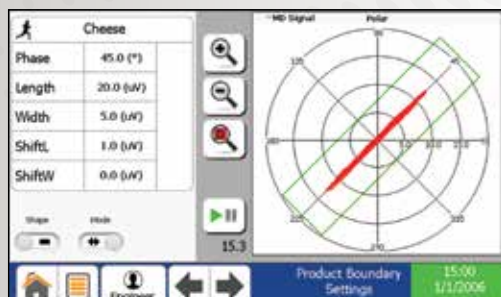
The **Xtreme** Metal Detector ships with factory pre-set settings for your product (based on actual testing and provided application data). Adding new products or changing parameters is simple.

Standard Features:

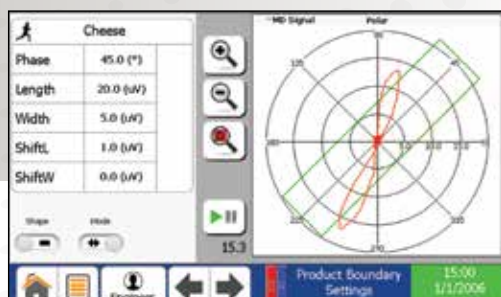
- Four password protected levels of access
- Auto set up and product learning
- Easily change product boundaries/rejection
- One touch log reporting
- Eight fields of data recorded on a large flash drive
- Multiple communication ports – USB and Ethernet
- Log/tracks/rejects, on/off, faults, warnings, product and setting changes, operator changes and much more



Product set screen



Product boundary screen



Metal detected breaks the product boundary



Main menu

Date	Time	User	T	Label	Description	Old	New
01/01/06	17:37:12	Engineer	E		Reject Log Cleared		
01/01/06	17:36:49	Engineer	F		Faults Cleared		
01/01/06	17:36:38	Engineer	P	Cheese	Shape	Rectangle	Rectangle
01/01/06	17:36:30	Engineer	F	Fault	Communication error with Amp	5.0	12.0
01/01/06	17:36:31	Engineer	P	Cheese	Shape	Rectangle	Rectangle
01/01/06	17:36:23	Engineer	P	Cheese	Faults Cleared		
01/01/06	17:36:17	Engineer	P	Cheese	Width	5.0	12.0
01/01/06	17:36:10	Engineer	F	Fault	Communication error with Amp	45.0	20.0
01/01/06	17:36:00	Engineer	P	Cheese	Phase	45.0	20.0
01/01/06	15:00:31	Engineer	E	User Change		Factory	Engineer

Event log/reject log



Remote Service & Troubleshooting

See Back Cover for Details

Xtreme® Models



XTREME® TUNNEL DETECTOR

Eriez' **Xtreme** Tunnel Metal Detectors are custom manufactured to suit any in-line processing application where space is limited. The **Xtreme's** state-of-the-art technology ensures you are always detecting the smallest ferrous, non-ferrous and stainless steel contaminants.



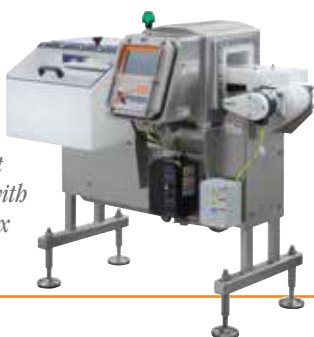
XTREME® TUNNEL DETECTOR WITH CONVEYOR

Tunnel Detector with Conveyor integrates the **Xtreme** aperture tunnel with a high-pressure wash-down conveyor. These systems can be ordered in a wide range of sizes with a myriad of optional equipment. Many standard designs are available in our Quick Ship Program.

- Continuously welded 304 stainless steel construction
- Single point of power in 110/220 VAC
- Food-grade belts
- Tool-less disassembly available on standard design

Available optional reject devices are shown below.

*Air Blast
Reject with
Lock Box*



*Diverter Arm
Reject*



*Pusher Arm
Reject*



XTREME® LIQUID LINE

Xtreme Liquid Line Metal Detector systems are designed for liquids, pastes, slurries or other viscous products where high-sensitivity metal detection is required. The detector head, support plate and reject valve are constructed of 304 stainless steel. The system can be mounted vertically or horizontally.

- Kynar pipe with stainless steel tri-clover
- Available in pipe sizes 1.5"-4" diameter

XTREME® VFS

The **Xtreme** Vertical Fill Seal (VFS) units are designed to mount into space-restricted areas below Vertical Form and Fill and Seal machines.

- Manufactured from stainless steel
- Remotely housed electronics



XTREME® VERTICAL DROP

Eriez' **Xtreme** Vertical Drop detectors are engineered for use in gravity free-fall applications.

- Stainless steel construction
- Low stack height



XTREME® WEBLINE

Eriez' **Xtreme** Webline metal detectors are engineered for use on web or sheet applications.

- Stainless steel construction
- Narrow profile design
- Remote electronics



XTREME® PHARMACEUTICAL

The **Xtreme** pharmaceutical metal detector is designed to inspect tablets and capsules that are gravity fed from the tablet press.

- 1.5"H x 4.5"W or .9"H x 4"W aperture
- Polished 304 stainless steel sensing head and frame
- Tool-less disassembly for all product contact components for easy cleaning
- Two-piece, easy-to-remove throughput chute
- Compact design for space-restricted areas



The Xtreme® Metal Detector Quick Ship Program

Eriez' Quick Ship Program matches stocked conveyors and **Xtreme®** Metal Detector apertures to meet a one to two week delivery. Eriez stocks four conveyor widths and various sized apertures for quick assembly and delivery. Conveyors are available in 6", 12", 18" and 24" widths with a food-grade belt. The program also enables Eriez to ship select sized heads in only a few days.

Eriez' **Xtreme** Metal Detectors are proudly designed and manufactured in the United States.



Custom-size metal detectors and conveyors are also available. Contact Eriez today to learn more.



Smart Service Portal allows Eriez Service Technicians to troubleshoot remotely via the internet.

SAFE AND SECURE CONNECTIVITY

- The Remote Service Package requires an open outbound port. No incoming port is required.
- A secure communication channel must be opened from inside the network to prevent unsolicited incoming requests.
- A single PC has access to all detectors to limit points of failure.
- Eriez technicians will only login to a customer machine with the approval of the customer.

PACKAGE INCLUDES

- 1 secure gateway device
- Unlimited remote troubleshooting during Eriez' business hours
- 5 after hours service calls/instances for one year after purchase
- Ability to connect an unlimited number of **Xtreme®** Metal Detectors to the Remote Service Package

Smart X7 Link enables users to access/view their detectors via the company intranet

- Make changes to detector settings
- Download reports

Start-up and Test Kit (Included with Every Order)



Eriez is a registered trademark of Eriez Manufacturing Co, Erie, PA

©2019 Eriez

All Rights Reserved



World Authority in Separation Technologies

2200 Asbury Road, Erie, PA 16506-1402 U.S.A.

Telephone: 814-835-6000 • Fax: 814-838-4960

Website: <http://www.eriez.com> e-mail: eriez@eriez.com



Manufacturing Facilities: AUSTRALIA • BRAZIL • CANADA • CHINA • INDIA • JAPAN • MEXICO • SOUTH AFRICA • UNITED KINGDOM • UNITED STATES